

EURO/IEC Fuses & Accessories

D Type (DIAZED)

FUSE-LINKS & SCREW CAP HOLDERS



500 VOLT D TYPE DIAZED FUSE-LINKS, SCREW CAPS AND FUSE BASES

Ferraz Shawmut D fuse-links, also called Diazed type, are 500 Volts AC rated with 75kA interrupting rating. They have 4 physical sizes, DI, DII, DIII, and DIV and fit into special screw caps. All fuse-links have blown-fuse indicators which are visible through the screw cap. Screw caps fit onto single pole bases which are screw or DIN rail mounted. All accessories such as covers, adapter rings, and gauge rings are described.

Ferraz Shawmut is also comprised of Lindner GmbH, a major supplier of D Type Diazed fuses. These fuses are now being sold to markets worldwide through the Ferraz Shawmut distribution network. For Lindner information please contact your local representative.

Ratings

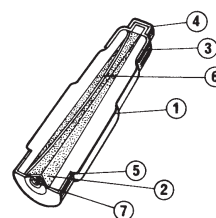
- **AC:** 500 Volts AC, 75kA interrupting rating
- **gL-gG** Performance Characteristic

Approvals

- Meet IEC, VDE and UNE Standards:
IEC 269-3, 3A
VDE 0636
UNE 21103
- Approved by Lloyds Register of Shipping and Bureau Veritas

D FUSES – Catalog Numbers, Ratings

SIZE	RATED In CURRENT (A)	CAP THREAD	CATALOG NUMBER	STANDARD PACK/CTN
DI	2	E 16	28013-G	50
	4		28019-G	
	6		28023-G	
	10		28031-G	
	16		28035-G	
	20		28037-G	
	25		28040-G	
DII	2	E 27	28113-G	5/25
	4		28119-G	
	6		28123-G	
	10		28131-G	
	16		28135-G	
	20		28137-G	
	25		28139-G	
DIII	35	E 33	28145-G	5/25
	50		28151-G	
	63		28155-G	
DIV	80	R 1-1/4"	28159-G	5
	100	R 1-1/4"	28163-G	5



- 1 Ceramic body
- 2 Sand
- 3 Upper contact
- 4 Contact top
- 5 Lower contact
- 6 Melting element
- 7 Indicator



28139-G



28159-G



28031-G



28113-G

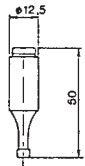
EURO/IEC Fuses & Accessories



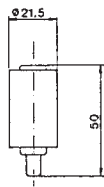
D Type (DIAZED)

FUSE-LINKS & SCREW CAP HOLDERS

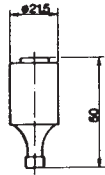
Dimensions



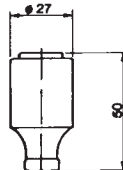
DI



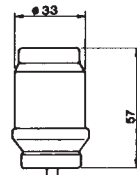
DII (2-6A)



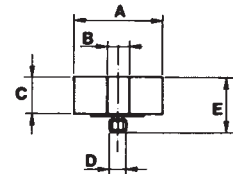
DII (10-25A)



DIII



DIV



Gauge Ring

Gauge Ring Dimensions

	SII	SIII	SIV
A	23.5	29	14
B	7	7	-
C	12.5	12.5	13.5
D	5	5	-

Gauge Rings

SIZE	RATED in CURRENT (A)	CAP THREAD	CATALOG NUMBER	STANDARD PACK
SII	2	E 27	27913-G	50
	4		27919-G	
	6		27923-G	
	10		27931-G	
	16		27935-G	
	20		27937-G	
SIII	25	27939-G	50	
	35	27945-G		
	50	27951-G		
SIV	63	27955-G	50	
	80	R 1-1/4"		27959-G



27959-G



27935-G

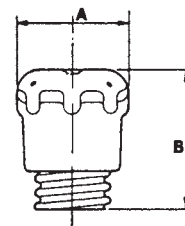
F

Screw Caps

SIZE	RATED in CURRENT (A)	CAP THREAD	CATALOG NUMBER	STANDARD PACK
KII	25	E 27	28039-G	50
KIII	63	E 33	28055-G	50
KIV	100	R 1-1/4"	28063-G	24



28063-G



Dimensions

	KII	KIII	KIV
A	38	48	63

Adapter Rings

DIII - DII			28100-G	24
------------	--	--	---------	----



28100-G

EURO/IEC Fuses & Accessories



D Type (DIAZED)

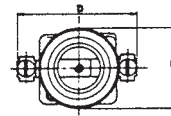
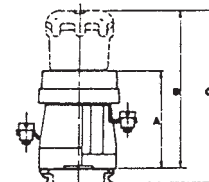
FUSE-LINKS & SCREW CAP HOLDERS



28202-G



28312-G



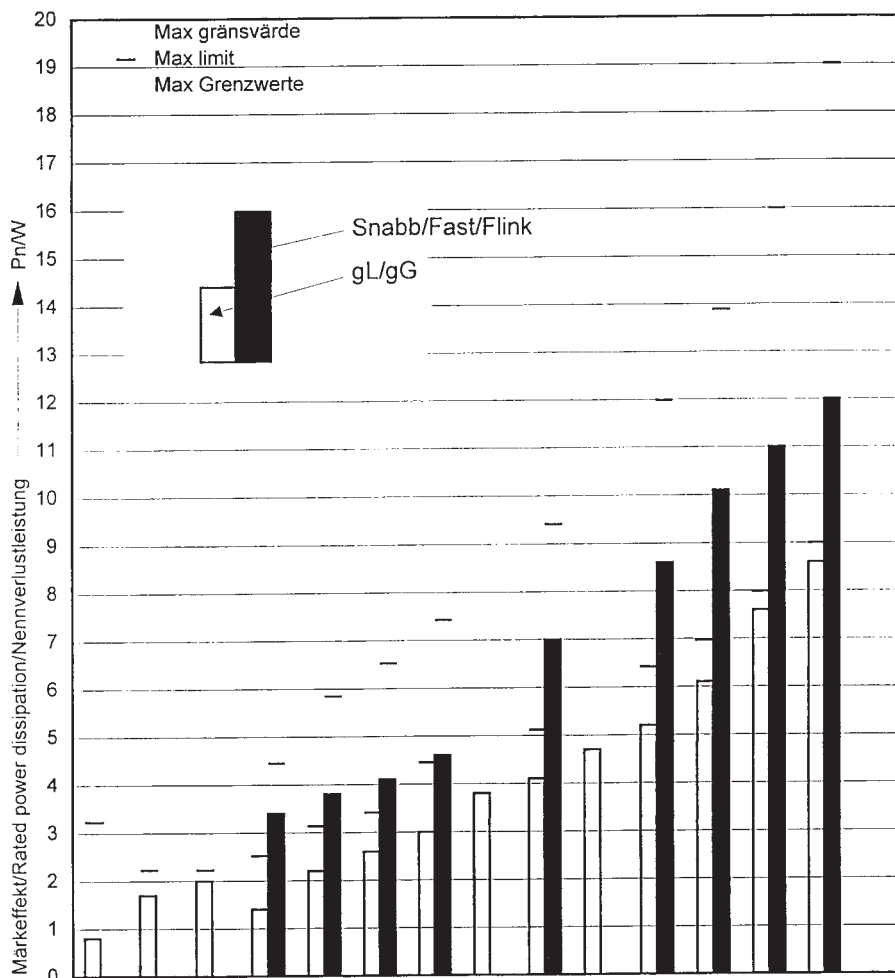
Single Pole Fuse Bases

MOUNTING METHOD	SIZE	RATED In CURRENT (A)	CAP THREAD	CATALOG NUMBER	STANDARD PACK
SCREW	EZII	25	E 27	28202-G	36
	EZIII	63	E 33	28204-G	36
	EZIV	100	R 1-1/4"	28206-G	6

MOUNTING METHOD	SIZE	RATED In CURRENT (A)	CAP THREAD	CATALOG NUMBER	STANDARD PACK
DIN RAIL	EZPII	25	E 27	28312-G	24
	EZPIII	63	E 33	28314-G	24

Dimensions

	EZ II	EZ III	EZ IV	EZP II	EZP III
A	54	54	75	55	55
B	80	83	105	82	84
C	36	46	58	90	94
D	20	21	46	65	67
E	47	56	77	46	55
F	4.5	4.5	8	-	-



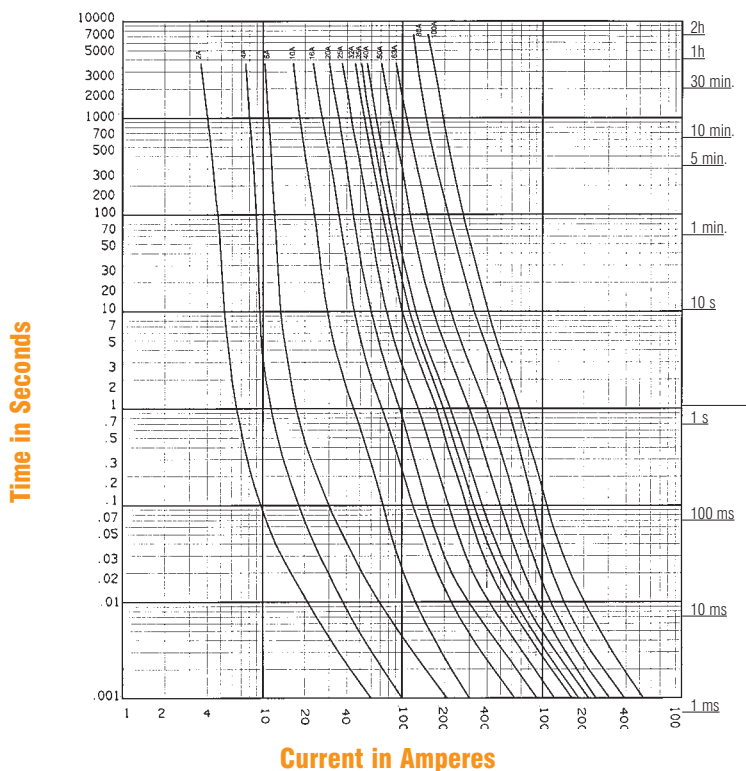
EURO/IEC Fuses & Accessories



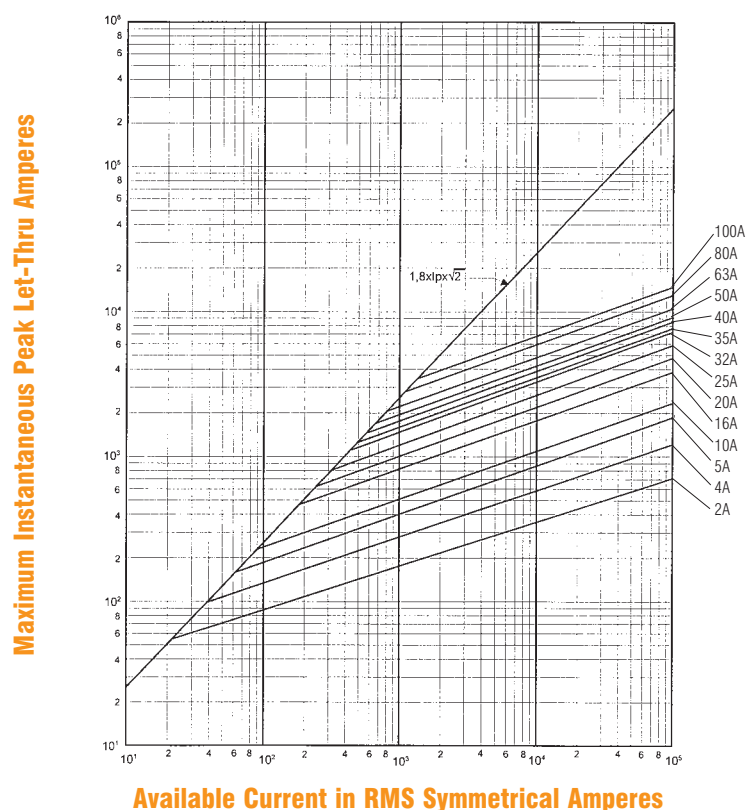
D Type (DIAZED)

FUSE-LINKS & SCREW CAP HOLDERS

Melting Time - Current Data - 2-100 Amperes



Peak Let-Thru Current Data - 16-100 Amperes



EURO/IEC Fuses & Accessories



D Type (DIAZED)

FUSE-LINKS & SCREW CAP HOLDERS

